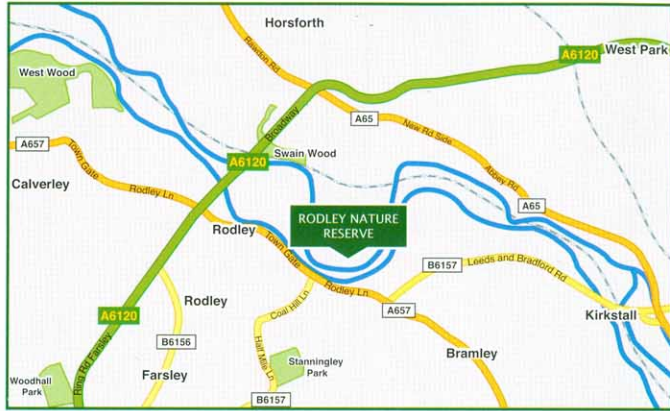


How to find us



Approaching from the A6120 Leeds Ring Road take the A657 into Rodley signposted Leeds and Rodley. Continue through Rodley for approx 0.5 miles and turn left on the access road directly opposite Longfield Drive. The entrance to the reserve is across the canal swing bridge.

Bus Service: 670 from Leeds to Bradford and 760 from Leeds to Keighley stop on Rodley town street.

Postcode: LS13 1HP

We are open Wednesday, Saturday and Sunday 10am to 4pm

For more information contact us on

0113 2040441

www.rodleynaturereserve.org



Facilities

- Light refreshments are available in the visitor centre. Toilets have disabled access.
- Car parking and a bicycle rack are available.
- Six observation hides and viewpoints overlook the wetlands with a further hide at the Manager's Garden.
- Most of the reserve is accessible to wheelchair users and pushchairs but some paths can be difficult in the winter months. There is seating at various points.

Dogs

To prevent disturbance to wildlife, we regret that dogs are not allowed on the reserve (except guide dogs)

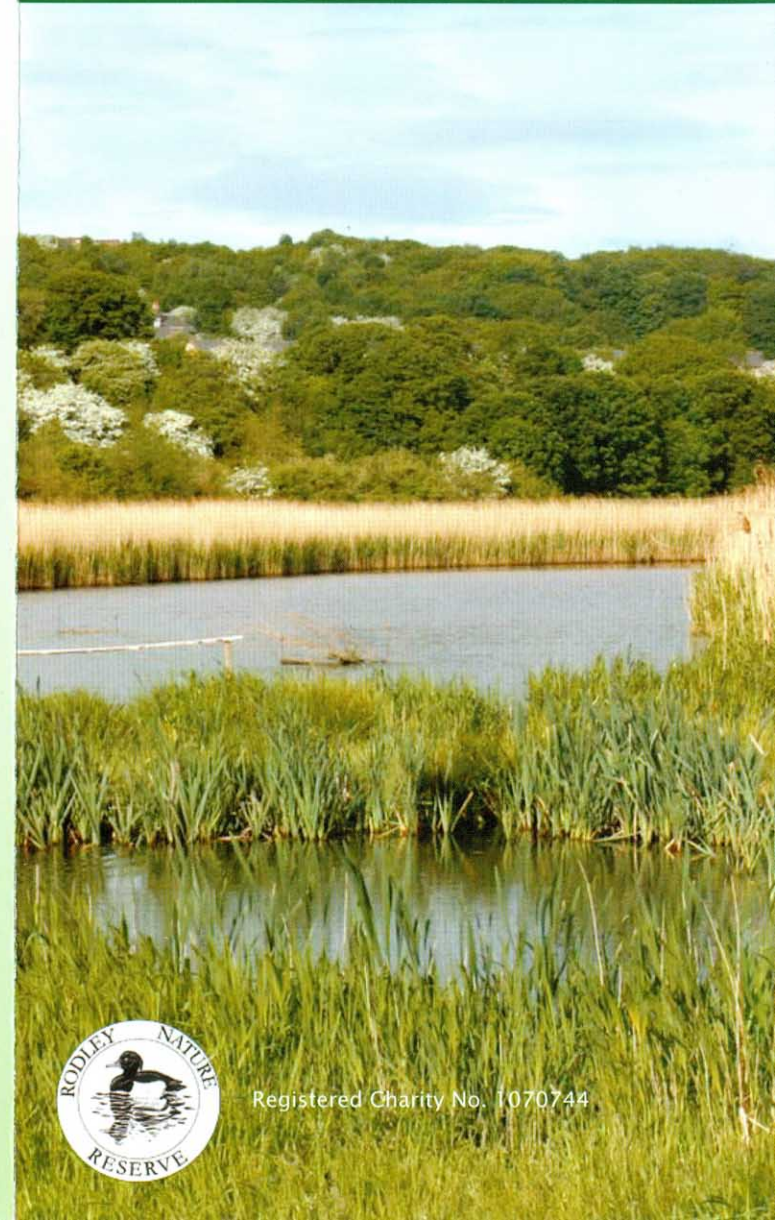
This leaflet has been sponsored by Leeds Philosophical and Literary Society



Promoting Science, Literature and the Arts in Leeds

RODLEY NATURE RESERVE

A wetland reserve close to the heart of Leeds



Registered Charity No. 1070744

Rodley Nature Reserve is designed to bring wetland wildlife back into the Leeds area. Created on a floodplain in the Kirkstall Valley, a recognised 'flyway' for wildfowl and waders on migration, the wetland habitats constructed here complement the nearby River Aire and the Leeds & Liverpool Canal.



1 The lagoon is home to little grebe and tufted duck throughout the year. Oystercatchers, lapwings and common terns have bred on the islands. In winter wigeon, pochard, teal and gosander may be present.

2 The duck marsh is a shallow body of water favoured by dabbling ducks such as gadwall and shoveler. Waders occur here on passage and snipe can be found in the winter months.

3 Sedge warblers and reed warblers breed in the reedbed in spring and summer. Kingfishers can be seen throughout the year and water rails are present in the winter months.



4 The ditches on the wet grassland are popular with dragonflies and amphibians in the spring and summer. In the autumn the whole area is flooded, bringing in various waterbirds.



5 The dragonfly ponds attract a good range of dragonflies in the summer months.

6 Various species of birds breed in the willow coppice including willow warbler, garden warbler, chiffchaff, blackcap, bullfinch, common whitethroat and song thrush.

7 Bird-friendly seed crops are grown on Tim's Field bringing in flocks of linnets, reed buntings and greenfinches.



8 Enjoy a walk through the hay meadows on well cut paths in the summer months to see wildflowers and butterflies.

9 Watch typical garden birds at the feeders in the Manager's Garden. Reed buntings visit the feeders in the winter months.